


PROCEDURE GUIDES IN THE STEINFURT DISTRICT

A COUNSELING OFFER FOR YOUNG PEOPLE WITH
(PENDING) DISABILITIES AND THEIR FAMILIES

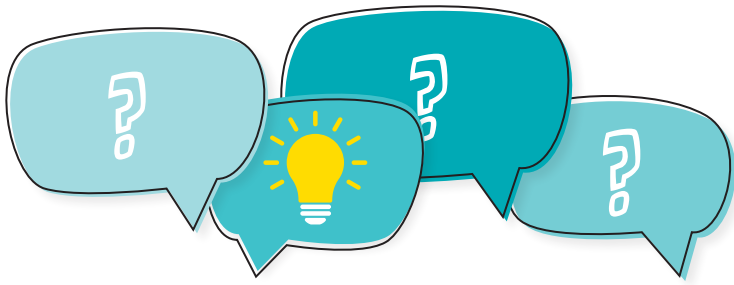
ibb Ibbenbüren
Das Hoch im Münsterland

Stadt
Emsdetten 

STADTRHEINE
Leben an der Ems

Stadt **G**reven

 **KREIS
STEINFURT**

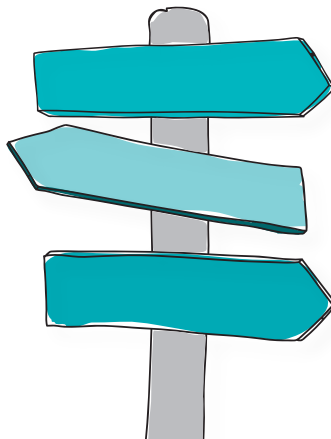


DO YOU LIVE IN THE STEINFURT DISTRICT, HAVE QUESTIONS AND ARE LOOKING FOR THE RIGHT HELP?

Families of children and young people (up to the age of 27) with mental, intellectual, or physical disabilities face many challenges. Especially when the situation is new or unexpected, orientation and support are needed.

WE PROCEDURE GUIDES

- We advise independently, free of charge and confidentially
- We inform about possible services of the integration assistance
- We support with the application process
- We guide you through the system of authorities
- We mediate contacts
- We accompany you to conversations on request



YOUR PROCEDURE GUIDES

FOR THE CITY OF EMSDETTEN

Jennifer Flint
02572 922-319
verfahrenslotse@emsdetten.de
www.emsdetten.de/verfahrenslotsin

FOR THE CITY OF GREVEN

Christine Diekmann
02571 920-137
christine.diekmann@stadt-greven.de
www.greven.net/verfahrenslotsin

FOR THE CITY OF IBBENBÜREN

Ina Krause
05451 931-5176
verfahrenslotse@ibbenbueren.de
www.ibbenbueren.de

FOR THE CITY OF RHEINE

Stefanie Althaus
05971 939-548
stefanie.althaus@rheine.de
www.rheine.de/verfahrenslotsen

FOR ALL OTHER TOWNS AND MUNICIPALITIES IN THE DISTRICT OF STEINFURT

Silvia Weddeling
02551 69-2356
silvia.weddelling@kreis-steinfurt.de
www.kreis-steinfurt.de/verfahrenslotsen

Further information – also in other languages – can be found on the websites of the youth welfare offices.