








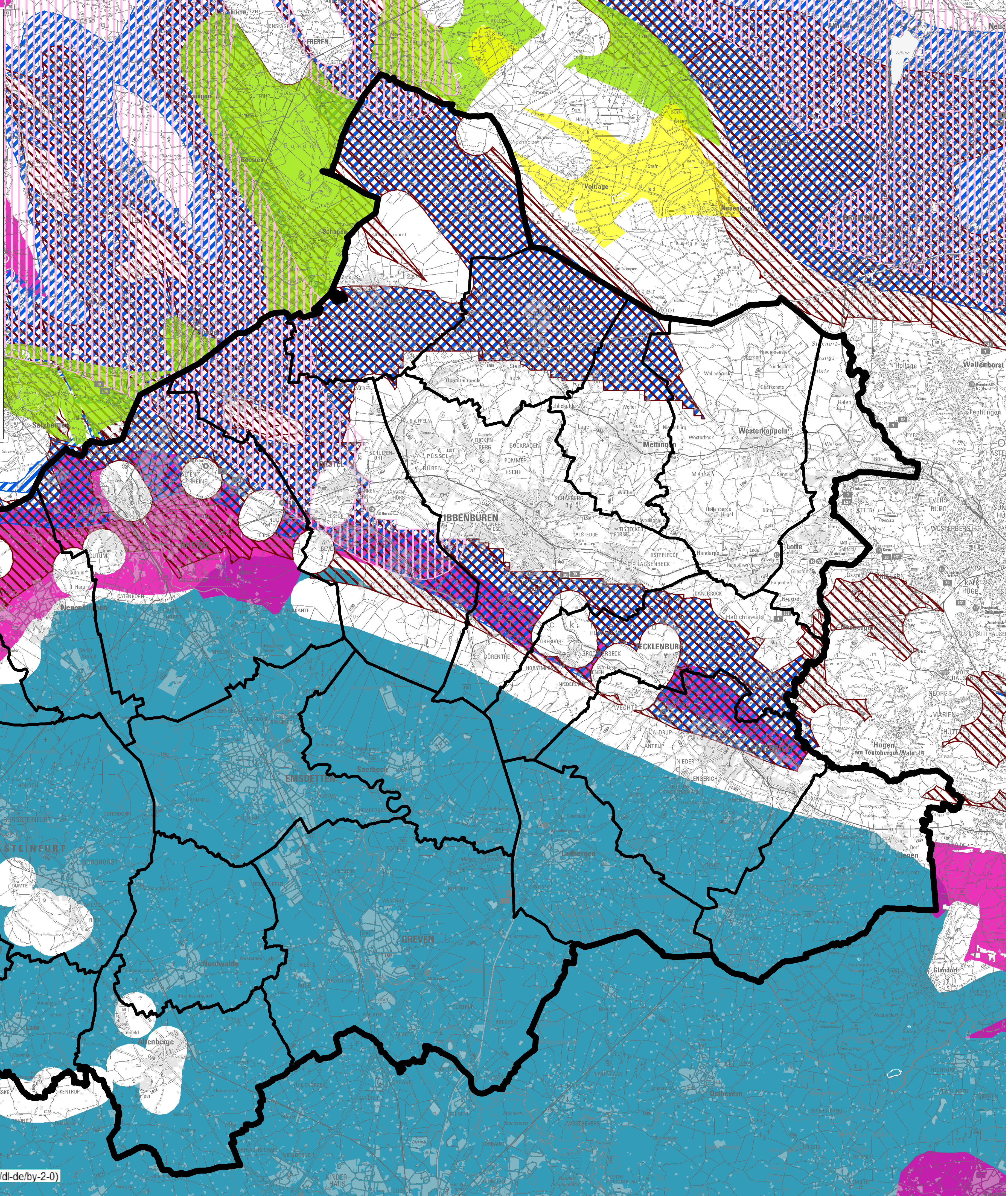


Legende

-  Steinsalz des oberen Bundsandsteins (TG 076 03)
-  Steinsalz des Malmes, oberer Jura (TG 077 00)
-  Steinsalz des Zechsteines, oberes Perm (TG 078 06)
-  Tongesteine des mittleren Jura (TG 005 00)
-  Tongesteine des Unterjura (TG 006 00)
-  Tongesteine der Unterkreide (TG 007 00)
-  Tongesteine der Oberkreide (TG 008 02)
-  Kreisgrenze
-  Gemeindegrenze

Datenquelle: Bundesgesellschaft für Endlagerung mbH

Bearbeitung und Gestaltung:
Kreis Steinfurt | Der Landrat | Umwelt- und Planungsamt
Stand: März 2021



NL